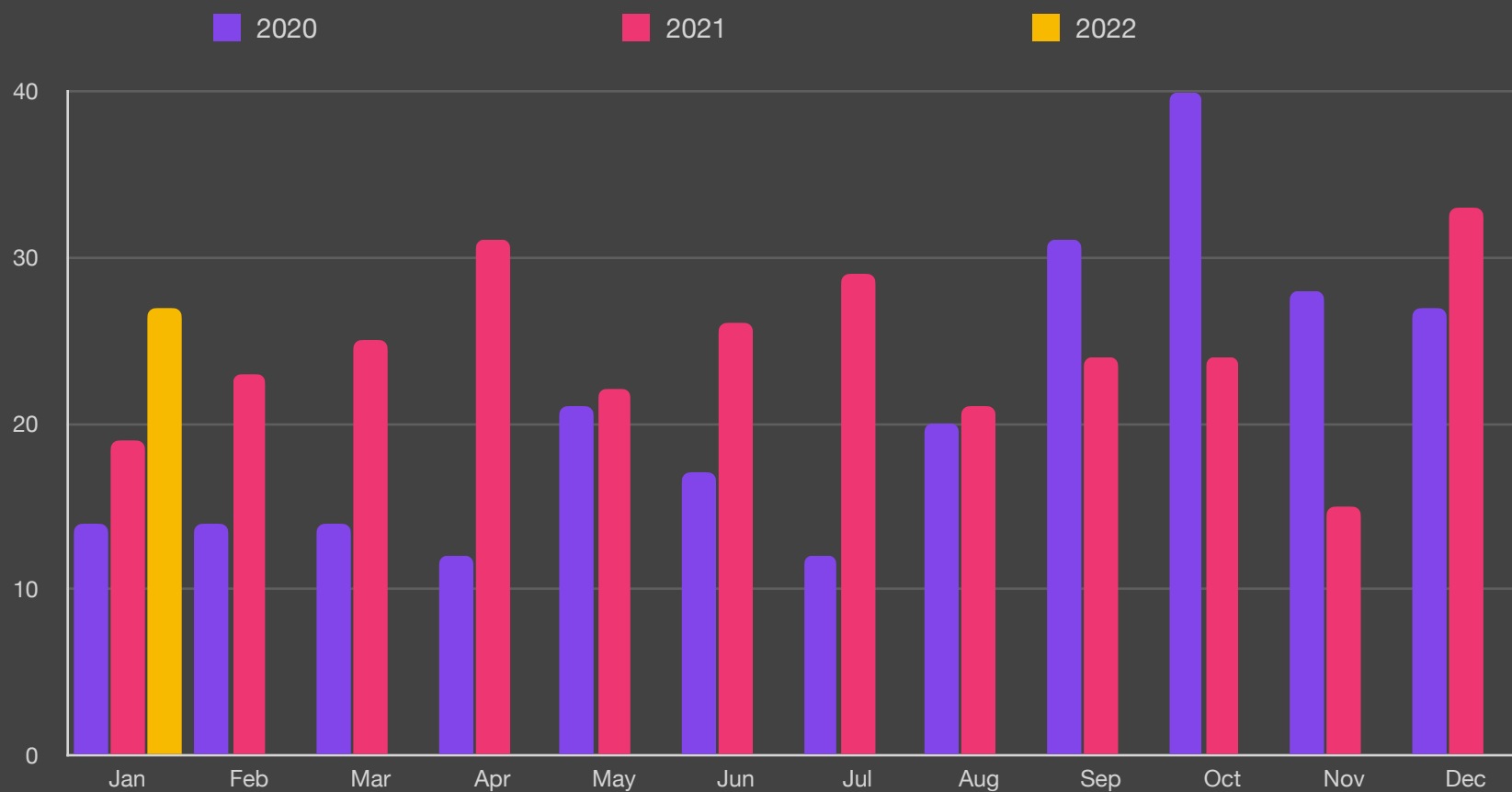


January 2022

Ransomware started strong in 2022 with a significant attack on Bernalillo County in New Mexico making headlines. The incident closed most government buildings and impacted education in the area. The cyberattack also had a knock on effect at a county jail when the security camera and automatic doors were knocked offline leaving the inmates in lockdown.



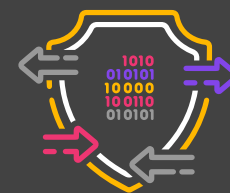
Ransomware Trend by Month



Key Trends



80% of all attacks use PowerShell



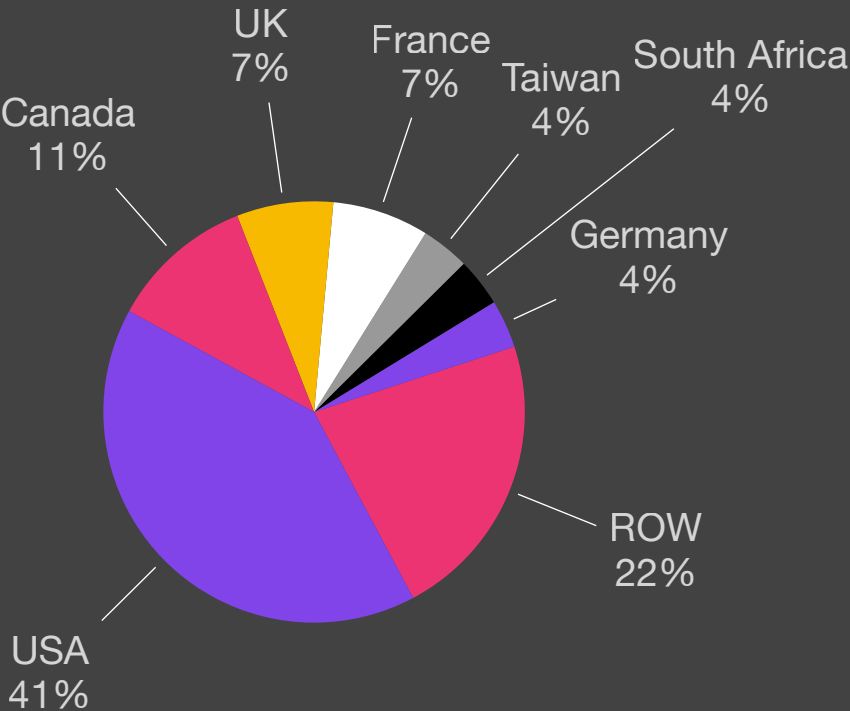
82% of attacks exfiltrate data



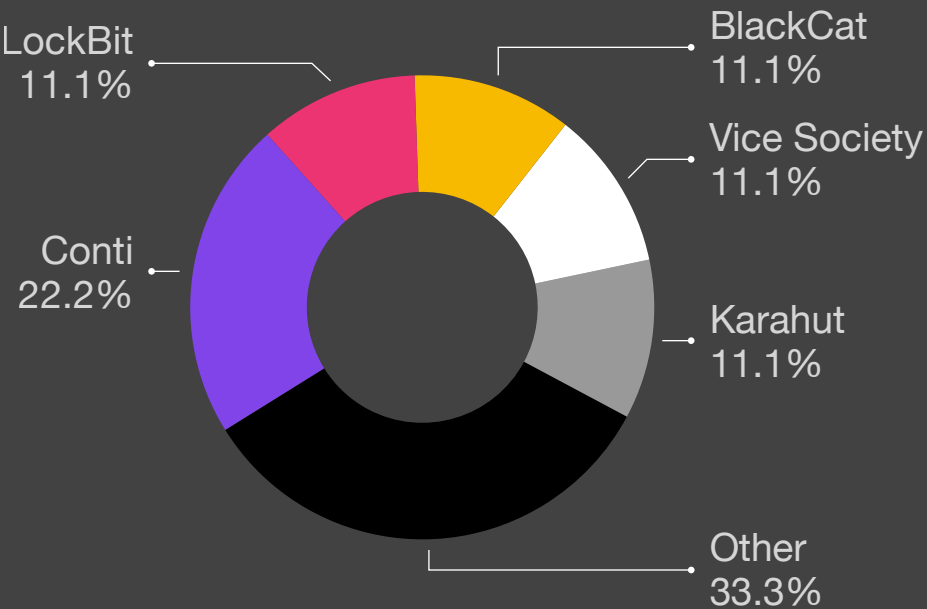
Average payout
US \$139k
+2.3% from Q2/21



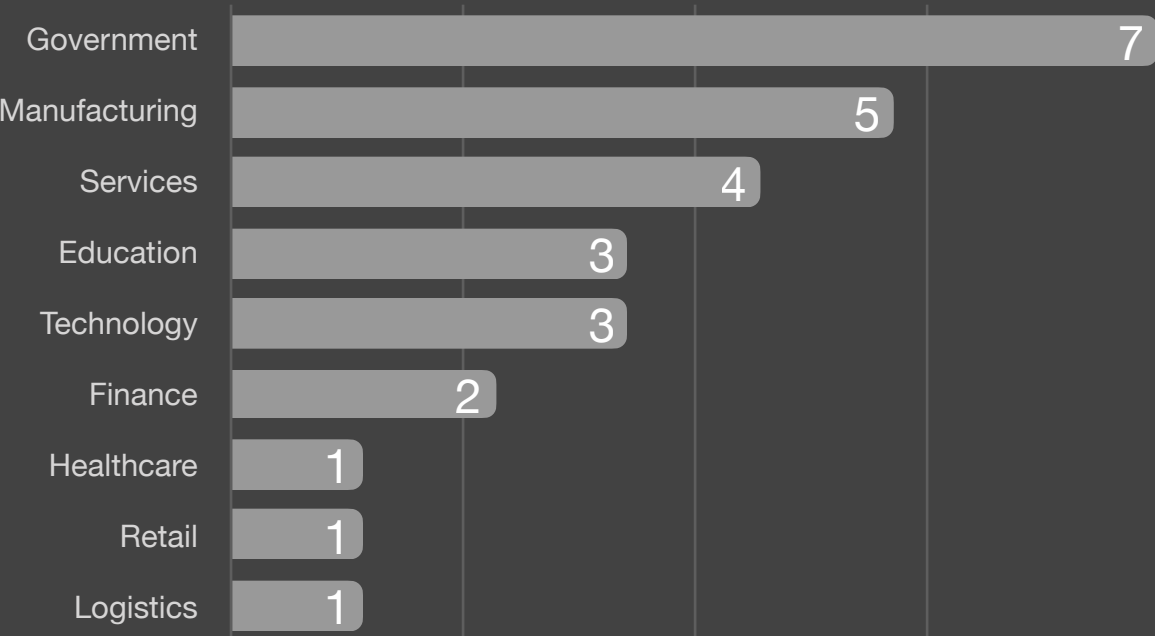
Ransomware by Country



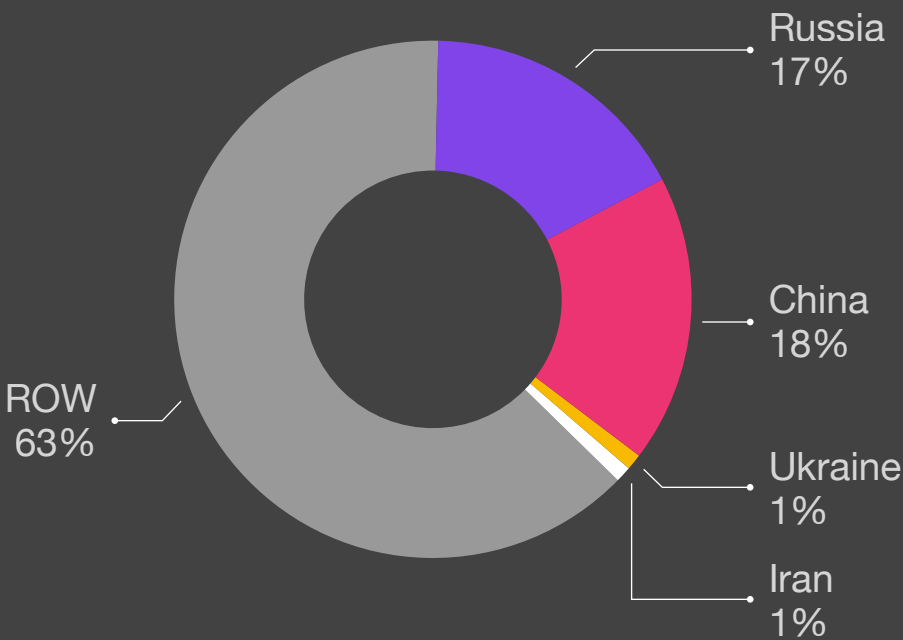
Ransomware by Variant



Ransomware by Industry

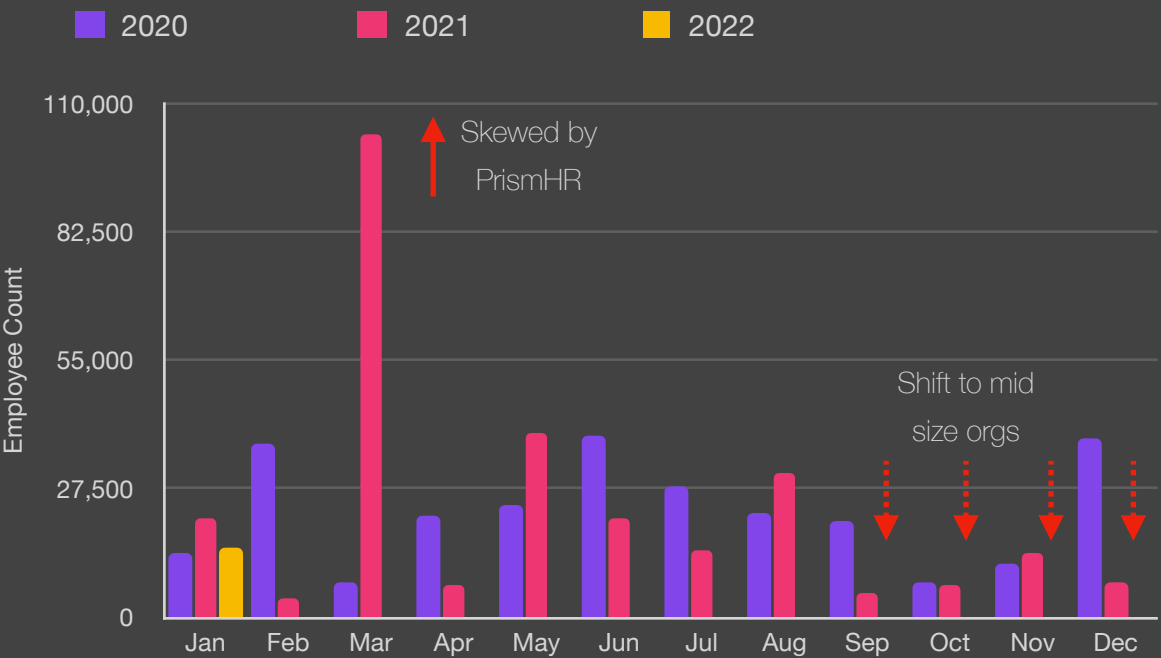


Ransomware Exfiltration Country

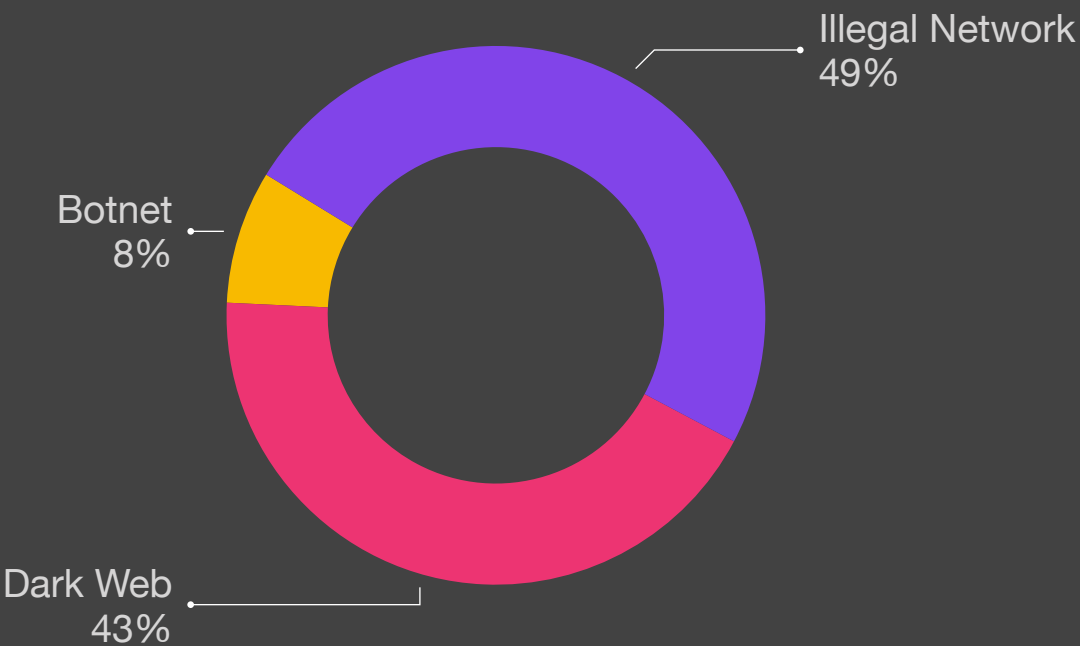




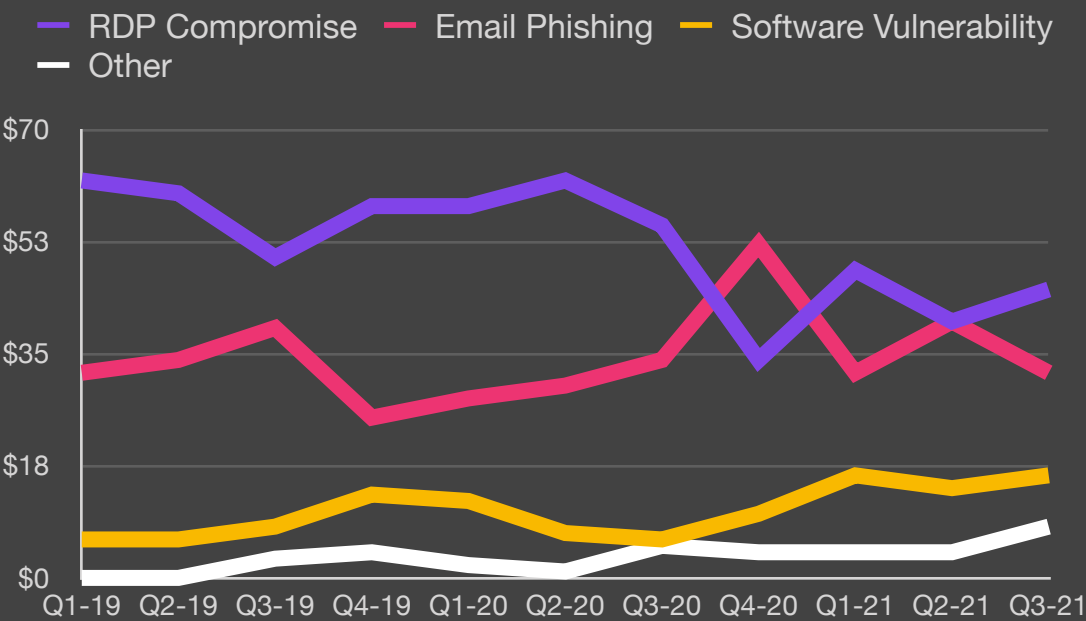
Size of Organization



Exfiltration Techniques



Attack Vectors²



²Courtesy Coveare



Methodology

- This report was generated in part from data collected by BlackFog Enterprise over the specified report period. It highlights significant events that prevented or reduced the risk of ransomware or a data breach and provides insights into global trends for benchmarking purposes. This report contains anonymized information about data movement across hundreds of organizations and should be used to assess risk associated with cybercrime.
- Industry classifications are based upon the ICB classification for Supersector used by the New York Stock Exchange (NYSE).
- All recorded events are based upon data exfiltration from the device endpoint across all major platforms.